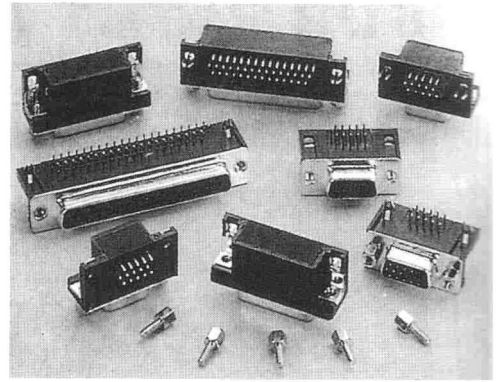


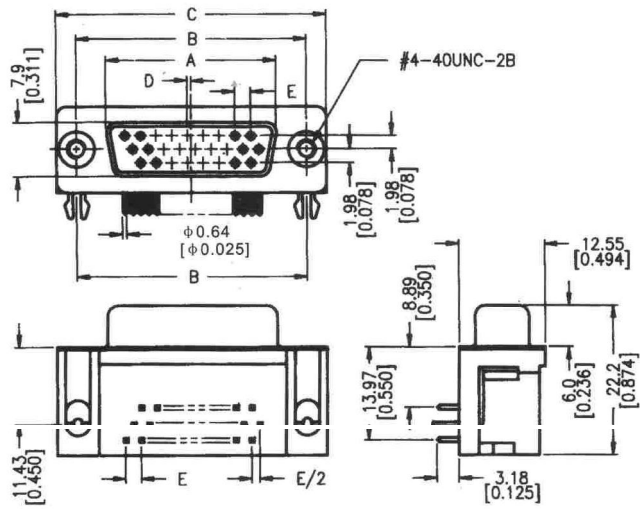
HIGH-DENSITY D-SUB RIGHT ANGLE PCB CONNECTOR

DMRH Series

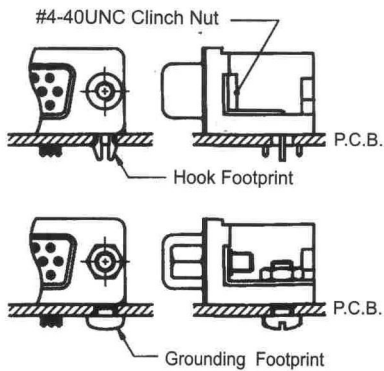
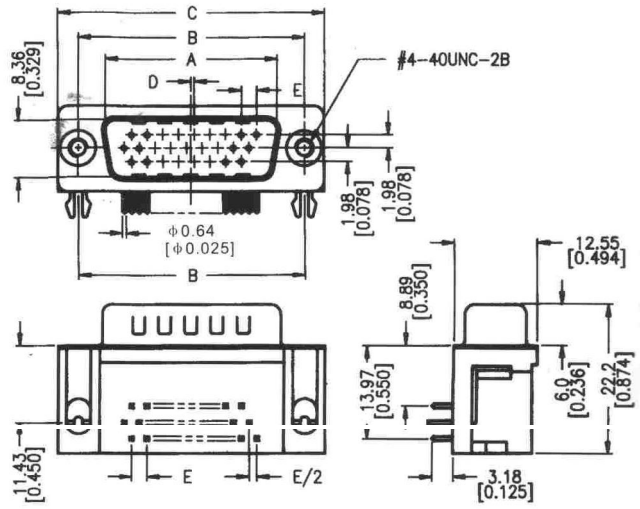


Dimension: $\frac{\text{mm}}{\text{inch}}$

FEMALE

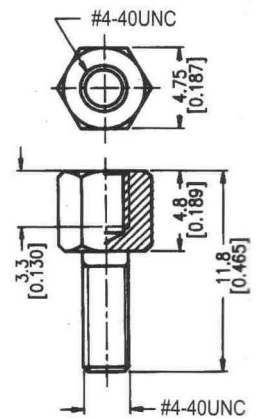


MALE



No. of Contacts	Dim. A Male	Dim. A Female	Dim. B	Dim. C	Dim. D	Dim. E
15	16.92 [0.666]	16.92 [0.643]	24.99 [0.984]	30.81 [1.213]	0.25 [0.010]	2.29 [0.090]
26	25.25 [0.994]	24.66 [0.971]	33.32 [1.312]	39.14 [1.541]	0.51 [0.020]	2.29 [0.090]
44	38.96 [1.534]	38.38 [1.511]	47.04 [1.852]	53.04 [2.088]	0.51 [0.020]	2.29 [0.090]
62	55.42 [2.182]	54.84 [2.159]	63.50 [2.500]	69.32 [2.729]	0.58 [0.023]	2.41 [0.095]

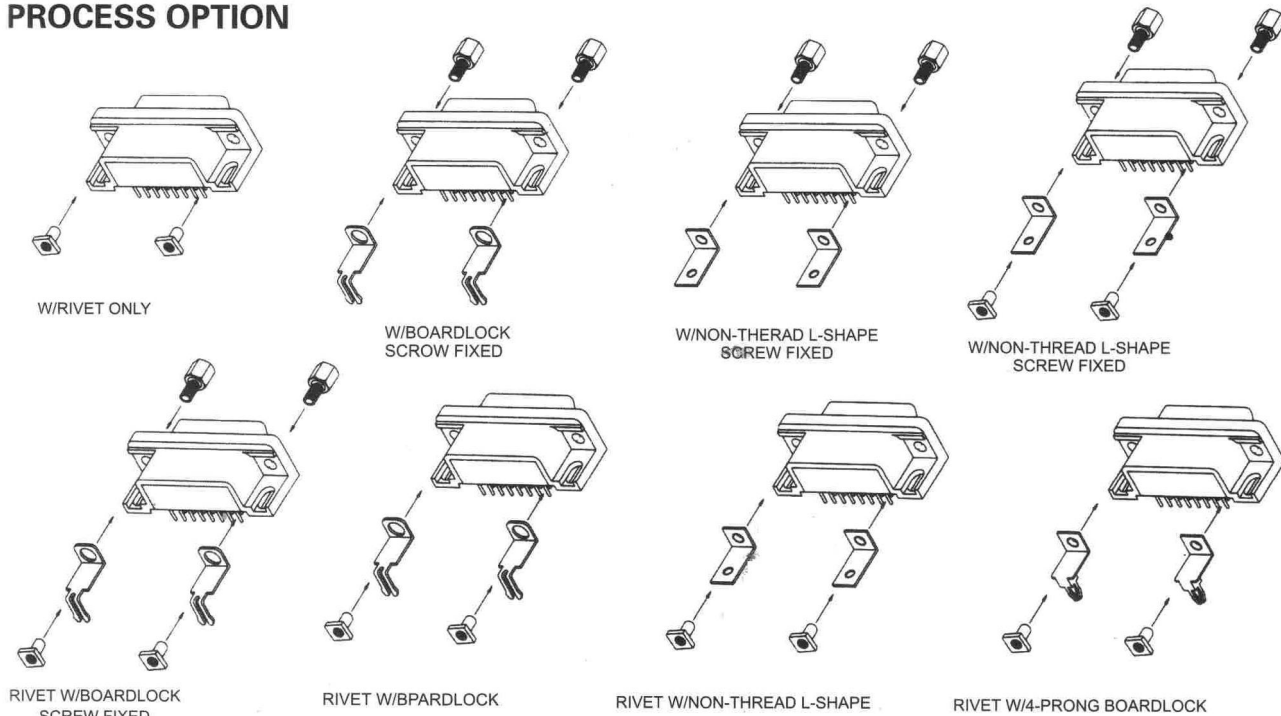
Standard Female Screwlock



HIGH-DENSITY D-SUB RIGHT ANGLE PCB CONNECTOR

DMRH Series

PROCESS OPTION



Order Information

DMRH	A	15	P	G	P	A	A	A	3
1	2	3	4	5	6	7	8	9	10

1.SERIES NO .
DMRH

2.TYPE
A=STANDARD

3.CONTACT NUMBER
15 26 44 62 78

4.CONTACT TYPE
P=MALE
S=FEMALE

5.CONTACT PLATING
S=SELECTIVE GOLD
G=GOLD FLASH
A=5 μ" GOLD
B=10 μ" GOLD
C=15 μ" GOLD
D=30 μ" GOLD

6.SHELL PLATING
T=TIN
N=NICKEL
Z=ZINC
P=TIN+DIMPLE
Q=NICKEL+DIMPLE

7.PROCESS OPTION
A=BOARDLOCK
B=RIVET W/BOARDLOCK
C=RIVET ONLY
D=NON-THREAD L-SHAPE
E=RIVET W/NON-THREAD L-SHAPE
F=4#40 THREAD L-SHAPE
G=RIVET W/4#40 THREAD L-SHAPE
T=4-PRONG BOARDLOCK
U=RIVET W/4-PRONG BOARDLOCK

8.PARTS OPTION
A=NON RIVET
B=4#40 THREAD RIVET
C=M3 THREAD RIVET
D=M2.6 THREAD RIVET
E=NON-THREAD RIVET
F=5.8mm FRONT HEX RIVET
G=6.1mm FRONT ROUND RIVET

9.PARTS DIMENSION
A=NON ACCESSORIES
B=LOOSE HEX-SCREWS
(4.8*11.8mm)
C=FIXED HEX-SCREWS
(4.8*11.8mm)
D=LOOSE HEX-SCREWS
(5.8*12.0mm)
E=FIXED HEX-SCREWS
(5.8*12.0mm)

10.INSULATOR COLOR
3=BLACK