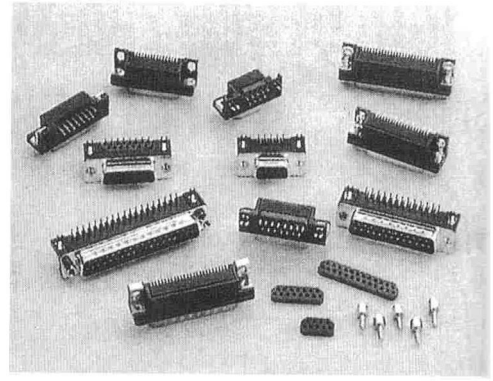


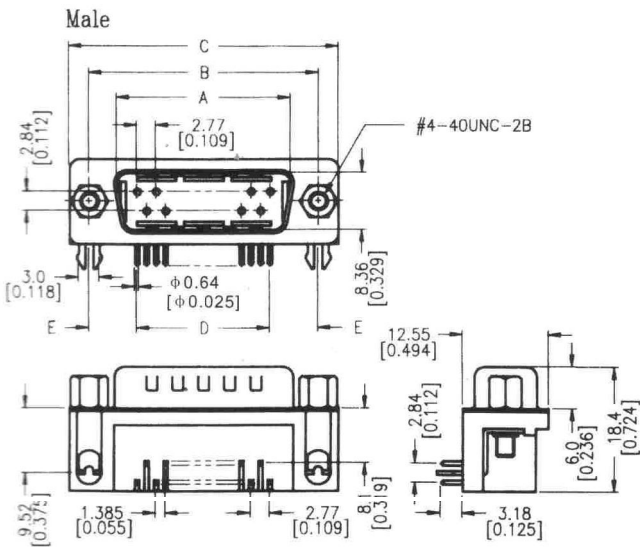
# D - SUB RIGHT ANGLE PCB CONNECTOR

DMR Series

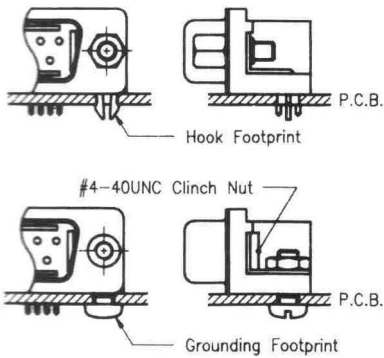
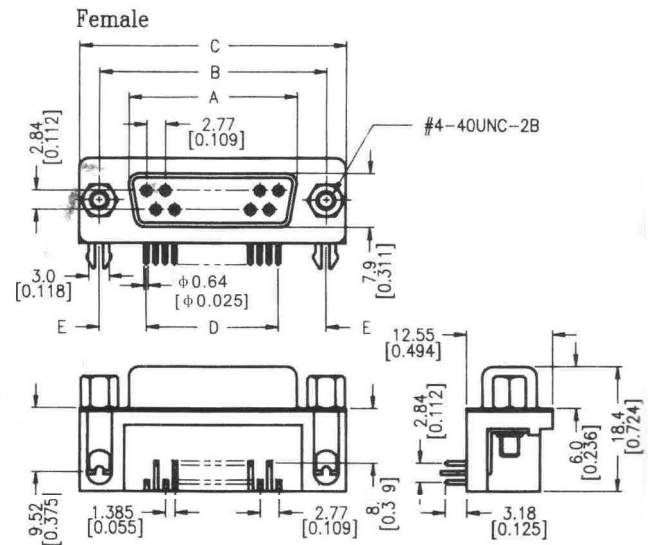


Dimension:  $\frac{\text{mm}}{\text{Inch}}$

## MALE

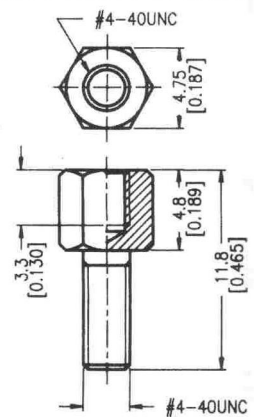


## FEMALE



No. Of Contacts	Dim. A Male	Dim. A Female	Dim. B	Dim. C	Dim. D	Dim. E
9	16.92 [0.666]	16.33 [0.643]	24.99 [0.984]	30.81 [1.213]	11.08 [0.436]	6.955 [0.274]
15	25.25 [0.994]	24.66 [0.971]	33.32 [1.312]	39.14 [1.541]	19.39 [0.763]	6.965 [0.274]
25	38.96 [1.534]	38.38 [1.511]	47.04 [1.852]	53.04 [2.088]	33.24 [1.309]	6.90 [0.272]
37	55.42 [2.182]	54.84 [2.159]	63.50 [2.500]	69.32 [2.729]	49.86 [1.963]	6.82 [0.269]

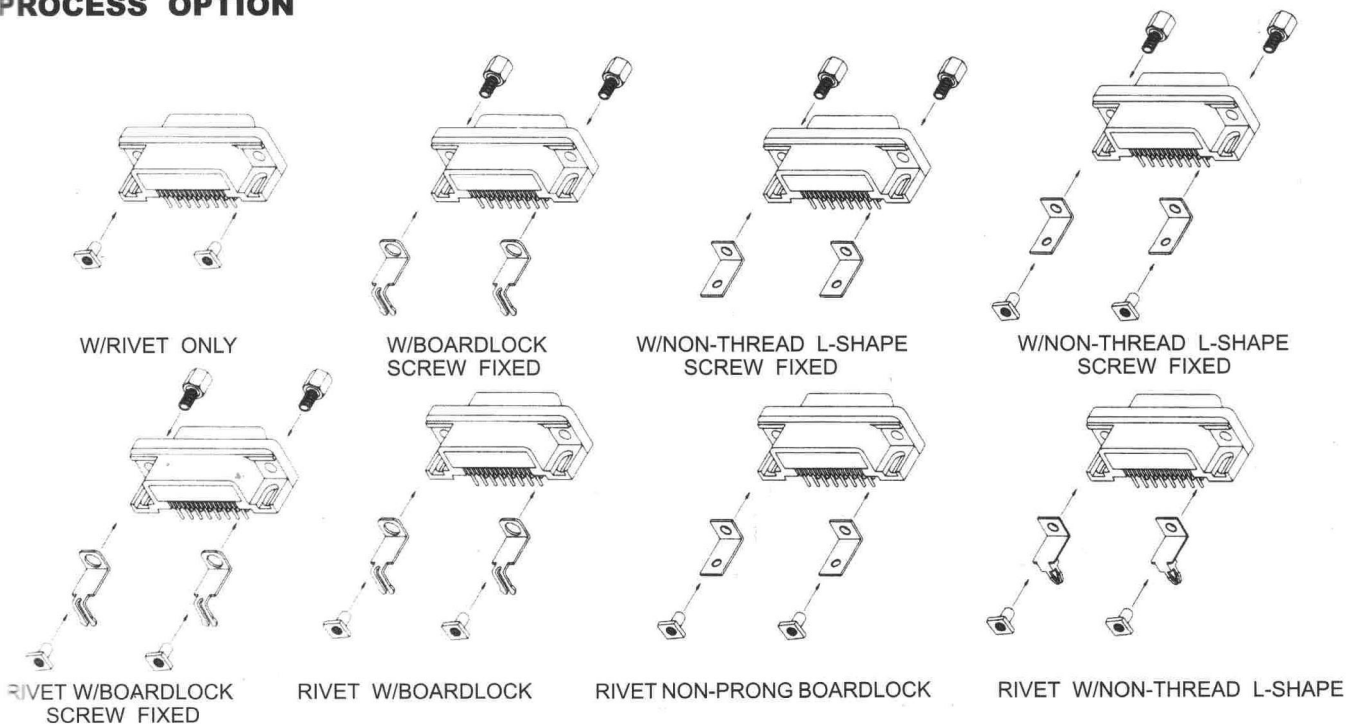
## Standard Female Screwlock



# D-SUB RIGHT ANGLE PCB CONNECTOR

DMR Series

## PROCESS OPTION



## Order Information

DMR	A	15	S	G	T	A	A	C	3
1	2	3	4	5	6	7	8	9	10

1. SERIES NO.  
DMR

2. TYPE  
A=STANDARD

3. CONTACT NUMBER  
09 15 25 37

4. CONTACT TYPE  
P=MALE  
S=FEMALE

5. CONTACT PLATING  
S=SELECTIVE GOLD  
G=GOLD FLASH  
A=5 μ " GOLD  
B=10 μ " GOLD  
C=15 μ " GOLD  
D=30 μ " GOLD

6. SHELL PLATING  
T=TIN  
N=NICKEL  
Z=ZINC  
P=TIN+DIMPLE  
Q=NICKEL+DIMPLE

7. PROCESS OPTION  
A=BOARDLOCK  
B=RIVET W/BOARDLOCK  
C=RIVET ONLY  
F=4#40 THREAD L-SHAPE  
G=RIVET W/4#40 THREAD L-SHAPE  
I=RIVET W/NON THREAD L-SHAPE  
J=RIVET W/M3 THREAD L-SHAPE  
T=4-PRONG BOARDLOCK  
U=RIVET W/4-PRONG BOARDLOCK

8. PARTS OPTION  
A=NON RIVET  
B=4#40 THREAD RIVET  
C=M3 THREAD RIVET  
D=M2.6 THREAD RIVET  
E=NON THREAD RIVET

9. PARTS DIMENSION  
A=NON ACCESSORIES  
B=LOOSE HEX-SCREWS  
(4.8\*11.8mm)  
C=FLXED HEX-SCREWS  
(4.8\*11.8mm)  
D=LOOSE HEX-SCREWS  
(5.8\*12.0mm)  
E=FIXED HEX-SCREWS  
(5.8\*12.0mm)

10. INSULATOR COLOR  
3=BLACK