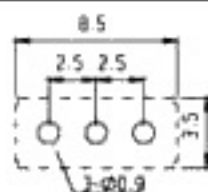
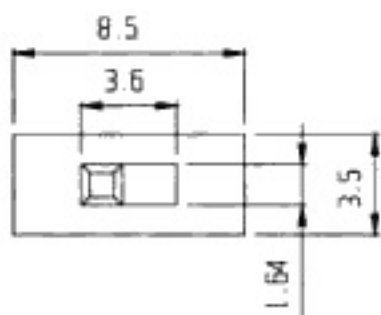


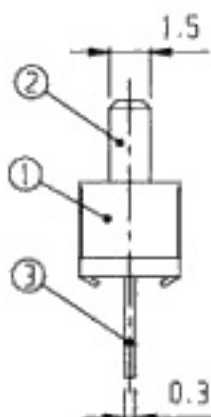
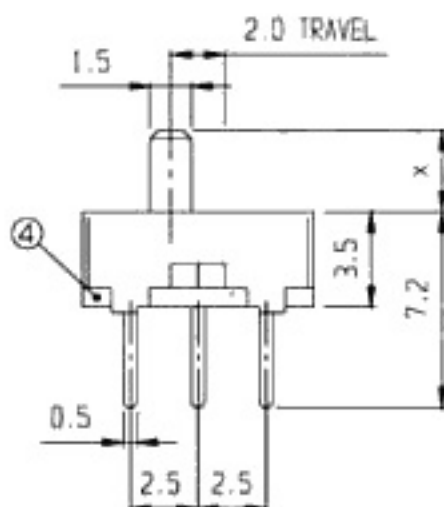
SCHMATIC



PCB LAYOUT



RoHS
Compliance



5	CONTACT	P B S	1	Ag PLATED				
3	TERMINAL	BRASS	3	Ag PLATED	4	TERMINAL BASE	PHENOL RESIN	1 NATURAL
1	FRAME	S P C C	1	Ni PLATED	2	KNOB	P O M	1 CG 2-7
NO	PART	MATERIAL	QTY	REMARKS	NO	PART	MATERIAL	QTY REMARKS

ISSUED

SPECIFICATION

TITLE: SLIDE SWITCH (1P2T)

RATING: DC 30V 0.3A

CONTACT RESISTANCE: 30mΩ max.

INSULATION RESISTANCE: 500MΩ at 500V DC

WITHSTAND VOLTAGE: AC 500V for 1 minute

OPERATION FORCE: REFER ATTACH SPECIFICATION

SWITCHING LIFE: 10K cycles min.

MODEL NO: SS-12D00 (CG)

TOLERANCE UNIT: MM

UP TO 1.0:±0.1 SCALE: 4:1

1.0 TO 10.0:±0.2 VERSION: 01

OVER 10.0:±0.3 DRWG NO:

DWN. *hms*

CHK'D. *hms*

APPD. *[Signature]*

